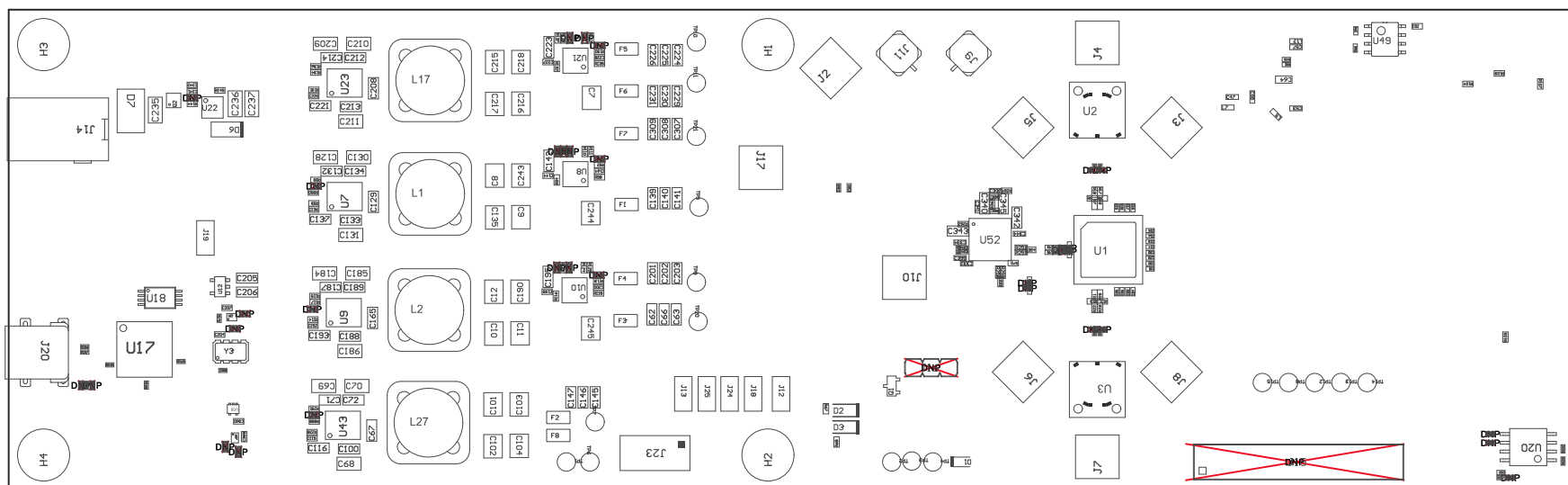
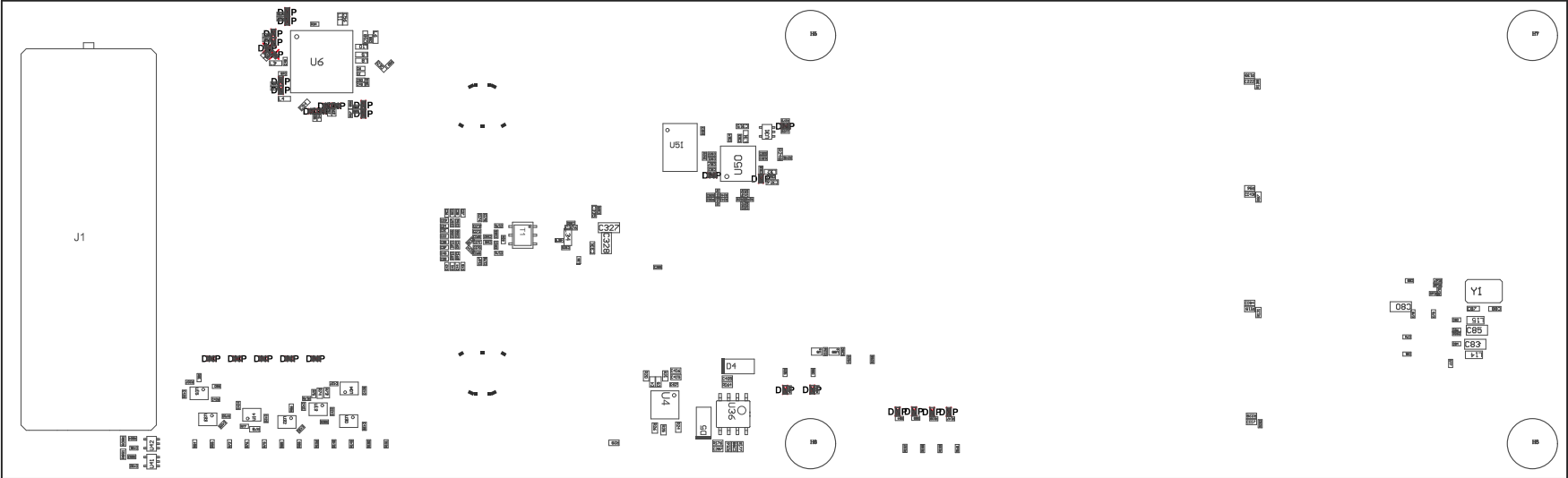


Z21 ■Install label in silkscreened box after final wash. Text shall be 8 pt font. Text shall be per the Label Table in the PDF schematic.  
Z22 ■These assemblies are ESD sensitive, ESD precautions shall be observed.  
Z24 ■These assemblies must comply with workmanship standards IPC-A-610 Class 2, unless otherwise specified.  
Z23 ■These assemblies must be clean and free from flux and all contaminants. Use of no clean flux is not acceptable.



COMPONENTS MARKED 'DNP' SHOULD NOT BE POPULATED.  
ASSEMBLY VARIANT: 001

PCB VIEWED FROM TOP SIDE	BOARD #: DC061	REV: B	SUN REV: Not In VersionControl
PLOT NAME = N/A	GENERATED : 6/11/2019 12:50:36 PM	TEXAS INSTRUMENTS	



COMPONENTS MARKED 'DNP' SHOULD NOT BE POPULATED.  
ASSEMBLY VARIANT: 001

PCB VIEWED FROM BOTTOM SIDE	BOARD #: DC061	REV: B	SUN REopt In VersionControl
PLOT NAME = N/A	GENERATED : 6/11/2019 12:50:37 PM	TEXAS INSTRUMENTS	